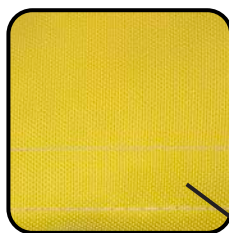


# PRODUCT SHEET:

## RAMPTECH ULTRALYTE™ PCA LAYFLAT DUCTING



### Lightweight construction. Heavy-duty performance.

It's the best of both worlds. RAMPTECH® UltraLyte™ PCA layflat ducting from Sage Parts revolutionizes PCA ducting design by combining super lightweight convenience with unsurpassed performance to tackle any and all rigors the aviation industry can throw at it.

Reinforced seams are lockstitched with high-strength polyester thread. The result? No unraveling. And three-ply fabric prevents wicking and will not degrade when exposed to Skydrol or other ramp chemicals, providing outstanding durability. It all adds up to longer service life, extensive cost savings and strong return on investment over the product lifecycle.



### OUTER SHELL

The high-strength yellow ballistic nylon outer shell is urethane coated for much better abrasion resistance than any lightweight PCA ducting available today. The fabric is resistant to the usual degrading effects of Glycol Alcohol or Skydrol exposure. Additionally, the outer shell is UV stabilized for protection against harmful sun degradation.

### INSULATION LAYER

The middle layer is a patented polypropylene fabric that is metalized on one side for superb radiant heat insulation. Its unique construction allows the material to flex without cracking or flaking. The material is also designed to inhibit growth of fungi and bacteria.

### INNER LINER

The high-strength inner liner consists of a tightly woven, rip-resistant, urethane-coated nylon material, which is designed to withstand the heavy wear associated with the airline industry.



Sage Parts  
30 Hub Drive, Melville, NY 11747  
+1.877.SAGE.877 | +1.631.501.1300 Tel  
+1.631.501.1619 Fax  
info@sageparts.com

[www.sageparts.com](http://www.sageparts.com)

# PRODUCT SHEET:

## RAMPTECH ULTRALYTE™ PCA LAYFLAT DUCTING



### Specifications: RAMPTECH ULTRALYTE™ Layflat

MATERIAL WEIGHT	Outer Shell: 9.3 oz/yd <sup>2</sup> (315 g/m <sup>2</sup> ) Inner: 5.9 oz/yd <sup>2</sup> (200 g/m <sup>2</sup> )
TEMPERATURE	-20° to +180° F (-29° to +82° C)
TRAPEZOID TEAR	Outer Shell: Warp=110 lb/in <sup>2</sup> (77,338 kg/m <sup>2</sup> )   Fill=70 lb/in <sup>2</sup> (49,215 kg/m <sup>2</sup> ) Inner Liner: Warp=85 lb/in <sup>2</sup> (59,761 kg/m <sup>2</sup> )   Fill 30 lb/in <sup>2</sup> (21,092 kg/m <sup>2</sup> )
ABRADE TO FAILURE	Outer Shell: 2,125 Cycles
DIAMETER	8 in, 12 in, and 14 in +/- 1/4 in (203.2mm, 304.8 mm, 355.6 mm)
LENGTH	10 ft, 15 ft, 20 ft, 25ft, 30 ft (3.04 m, 4.57 m, 6.09 m, 7.62 m, 9.14 m)
COLOR	Yellow (other colors available upon request)
OPTIONAL ENDS	Fold Over Velcro® Cuff, Soft Cuff, or Zipper Cuff

### ACCESSORIES AVAILABLE

#### Reducers

Diameters of  
12 to 8 inches  
14 to 8 inches

#### Starter Sections

Diameters of  
8, 12, and 14 inches  
Lengths at  
3, 5, and 8 feet  
Custom available upon request

#### Elbows

Diameters of  
8, 12, and 14 inches  
Angles of 45 and 90 degrees

#### Transition Sections

Diameters of 12 and 14 inches  
Cuff combinations are Zipper  
to Velcro, Velcro to Zipper, Soft  
Cuff to Velcro, and Soft Cuff to  
Zipper

#### Reducing Elbows

14 to 8 inches at 90 degrees  
14 to 8 inches at 45 degrees

#### Wye

8x8x8 inches  
12x12x12 inches  
of any cuff combination

#### Clamps

8 inch - Part Number 501197  
12 inch - Part Number 501198  
14 inch - Part Number 501199



Sage Parts  
30 Hub Drive, Melville, NY 11747  
+1.877.SAGE.877 | +1.631.501.1300 Tel  
+1.631.501.1619 Fax  
info@sageparts.com

[www.sageparts.com](http://www.sageparts.com)